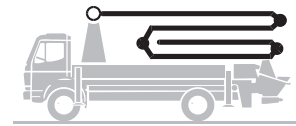


Truck-mounted concrete pump

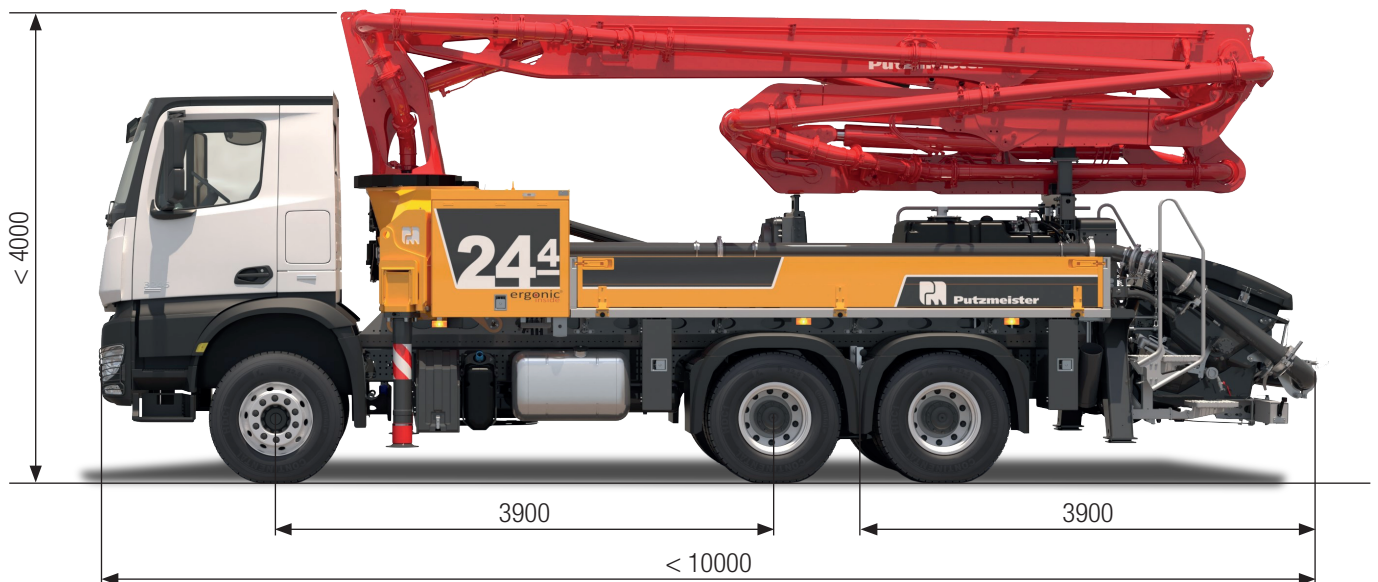
BSF 24-4.11 H

Output up to 160 m³/h
 Delivery pressure up to 130 bar*



.16 H
 .15 i LS

ergonic[®]
 inside **3**



Note: Standard version. Dimensions and weights depend on truck, pump model and equipment.
 Dimensions in mm. Example based on Mercedes Benz Arocs 2636 with a 15 i LS core pump.
 For illustration only.

Technical data

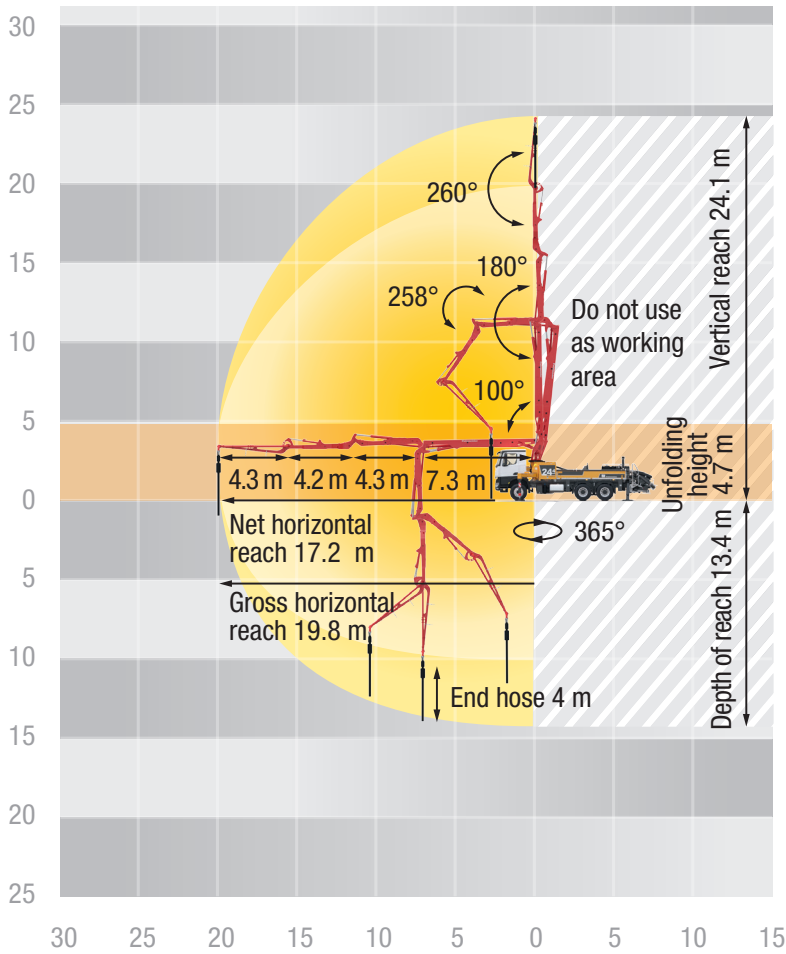
Boom M 24-4			
Sections			4
Reach height	m		24.1
Horizontal reach	gross	m	19.7
	net	m	17.2
Reach depth max.	m		13.4
Unfolding height	m		4.7**
End hose length	m		4
Folding system			ZR
Delivery line			DN 125

Pump		BSF	.11 H	.16 H	.15 i LS *
Rod side	Output	m ³ /h	-	160	-
	Delivery pressure	bar	-	85	-
	Strokes	1/min.	-	31	-
Piston side	Output	m ³ /h	110	108	150
	Delivery pressure	bar	78	130	85
	Strokes	1/min.	32	21	24
	Delivery cylinder	Ø mm	230	230	250
	Stroke	mm	1400	2100	2100

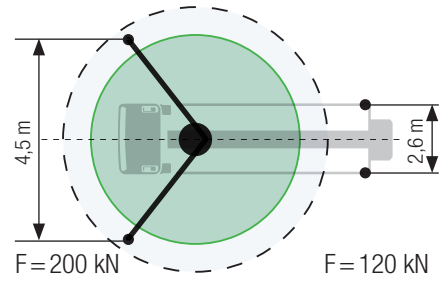
Delivery line boom max. 85 bar. All data maximum theoretical.

* for CE markets only ** Unfolding height depending on the frame height of the vehicle

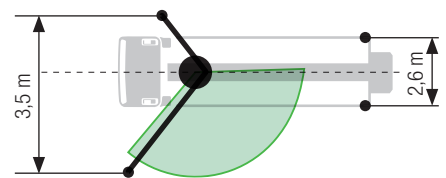
Reach information diagram, Support



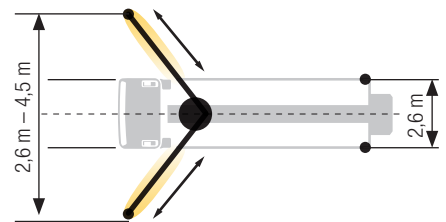
Standard – Full support



OSS** – One-side support



iSC* – Full-flexible support



Dimensions can differ depending on configuration.
Support width based on center of support leg.
Diameter of swivel plate 270 mm.

** for non-CE markets only

* for CE markets only

Delivery scope standard equipment

Support	Delivery line	Core pump / Hopper	Water pump, 160 l/min 25 bar
Full support system	Deck delivery line in boom delivery line quality	Agitator rotation automatic, dep. on pump direction	Water tank 700 l
Support plates (4x), in 2 magazines	Delivery line (1-layer)	Agitator safety switch off (RFID)	Safety
Swivel support plates	End hose 4 m DN125	Central hopper lubrication, electric	Connections for hydraulic emergency supply (boom)
Lighting	Core pump / Hopper	Hinged elbow with cleaning port	Guard rail on pedestal
Control box lighting, LED	Agitator rotation automatic, dep. on pump direction	Spectacle wear plate DURO 22	Hand rail right side
Control points lighting, LED	Agitator safety switch off (RFID)	Splash guard fixed	Mushroom button for horn, yellow
Hopper lighting, LED	Central hopper lubrication, electric	Steps left and right, zinc-plated	Towing eye
Light for illumination pump and water box, LED	Hinged elbow with cleaning port	Wash-out port lid with locked slide pin	Control systems
Miscellaneous	Spectacle wear plate DURO 22	Cleaning	EOC 2.0 (Ergonic Output Control)
Container for sponge balls	Splash guard fixed	Cleaning hose 8 m+2 m incl. bracket and nozzle	Ergonic 3
Delivery note box, plastic	Steps left and right, zinc-plated	Connection for water tank filling, both-sided	Ergonic Graphic Display 9,7" incl. Ergonic diagnosis interface
Operating instruction and spare parts manual (1x paper, 1x CD-ROM)	Wash-out port lid with locked slide pin	Water outlet on hopper, for small quantities (1/2")	Radio remote control with display
Paintwork Putzmeister standard	Cleaning		
Side panel right/left foldable	Cleaning hose 8 m+2 m incl. bracket and nozzle		
Tool kit	Connection for water tank filling, both-sided		
	Water outlet on hopper, for small quantities (1/2")		

See quotation for exact serial delivery scope.
Comprehensive range of options available on request.